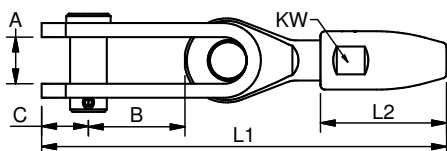


SWAGELESS TOGGLE TERMINAL WITH CONE

Polished Stainless Steel - AISI 316L



ART. NO.	WIRE	PIN	A	B	C	KW	L1	L2	BL/KG	KG/100	
SC830804	4	5/32"	8	10	20	9	12	85	27	2200	8,7
SC831047	-	3/16"	9,5	12	26	12	14	102	30	2800	16,1
SC831005	5	-	9,5	12	26	12	14	102	30	2800	16,1
SC831355	7/32"	12,7	18	36	18	17	132	38	5000	30,2	
SC831306	6	-	12,7	18	36	18	17	132	38	5000	30,2
SC831363	-	1/4"	12,7	18	36	18	17	132	38	5000	30,2
SC831307	7	9/32"	12,7	18	35	18	19	145	46	6000	35,8
SC831308	8	5/16"	12,7	18	35	18	22	158	54	6000	42,5
SC831608	8	5/16"	16	20	41	20	22	173	54	8000	64,7
SC831695	-	3/8"	16	20	41	20	27	187	64	9800	77,5
SC831995	-	3/8"	19	24	45	25	27	202	64	11000	110,3
SC831610	10	-	16	20	41	20	27	187	64	9800	77,4
SC831910	10	-	19	24	45	25	27	202	64	11000	110,3
SC831911	-	7/16"	19	24	45	25	33	226	82	17000	141,4
SC831912	12	-	19	24	45	25	33	226	82	17000	141,4
SC831913	-	1/2"	19	24	45	25	33	226	82	17000	141,4
SC832214	14	9/16"	22	26	48	30	37	247	89	23000	203,2
SC832516	16	5/8"	25,4	29	61	37	42	285	100	28000	310,6
SC832819	19	3/4"	28	34	65	34	44	319	115	30000	413,7
SC833522	22	7/8"	34,8	44	83	41	50	377	125	38000	670,5
SC833526	26	1"	34,8	44	83	41	66	403	150	48000	886,6



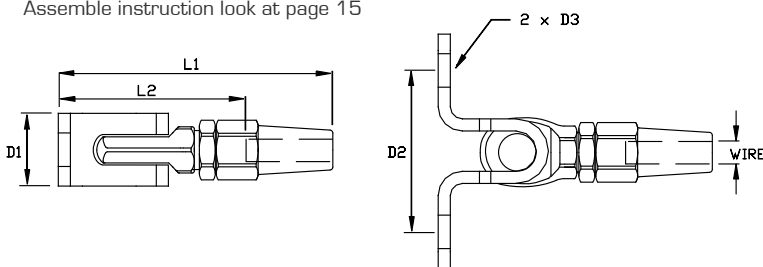
In addition to the Lloyds approved swageless system, the swageless cone terminal for 1x19 wire construction enables safe and reliable wire attachment up till Ø 26 mm diameter.

SWAGELESS WALL TOGGLE

Polished Stainless Steel - AISI 316

ART. NO.	WIRE	D1	D2	D3	L1	L2	B.L./KG	KG/100	ART.NO. RE-FIT JAWS
831503	3	14	40	Ø6,4	64	43	700	5,8	080003
831504	4	18	44	Ø8,3	79	50	1500	9,2	080004

Assemble instruction look at page 15



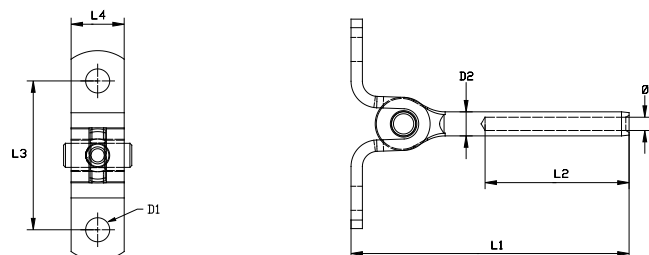
Safe, reliable and machine free swaging of wire, with the fastest swageless system on the market. The swageless wall toggle terminal is easy to use and ideal for site work where a flexible wire termination is required.



WALL TOGGLE TERMINAL

Polished Stainless Steel - AISI 316

ART. NO.	WIRE DIM.	D1	D2	L1	L2	L3	L4	Ø	B.L./KG	KG/100	PACK
191503	3	6,4	6,4	74	38	40	14	3,5	1250	4,0	BULK



The flexible wall toggle terminal is marked with wire size & wire-hole depth for ease of use.

