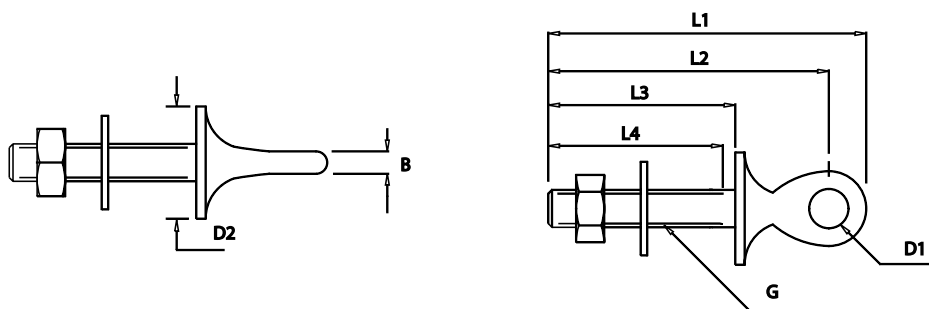


EYE BOLTS FORGED

Polished Stainless Steel - AISI 316

ART. NO.	G	D1	D2	B	L1	L2	L3	L4	B.L./KG	KG/100	PACK
310630	M6	6,5	25,0	4,0	53	46	30	30	1200	1,3	10
310660	M6	6,5	25,0	4,0	83	76	60	60	1200	2,1	10
310835	M8	8,5	25,0	5,0	65	58	35	35	2200	3,3	10
310880	M8	8,5	25,0	5,0	110	104	80	75	2200	5,0	10
311050	M10	10,5	30,0	6,0	87	75	50	50	3500	8,2	10
311000	M10	10,5	30,0	6,0	137	125	100	85	3500	11,0	10

Note: All breakloads are determined by eye (D) and thread



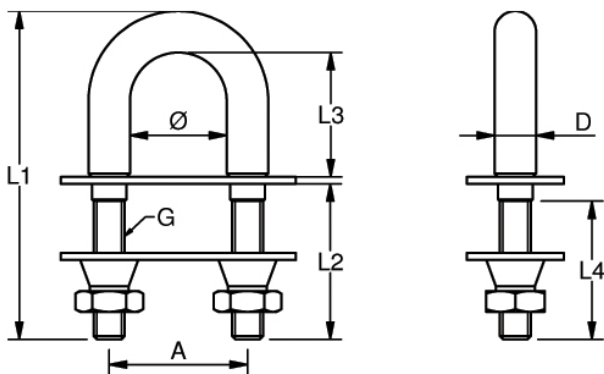
The Welded and forged eye bolts are supplied with a pre-welded cover disc, washer and nut and offer a strong attachment. Use them , for example, combined with forks welded or machined..

SECURITY "U" BOLTS

Polished Stainless Steel - AISI 316 - Wst. 1.4401

ART. NO.	G	Ø	A	D	L1	L2	L3	L4	B.L./KG	KG/100	PACK	Nut
Class3 certified												
431265	M12	32	46	14	122	65	41	48	5100	31,0	1	50 Nm
Class2 certified												
431045	M10	28	40	12	95	45	38	40	3500	22,0	1	50 Nm

Note: All breakloads are determined by thread



Hardchromed U-bolt with security locking nuts.

