



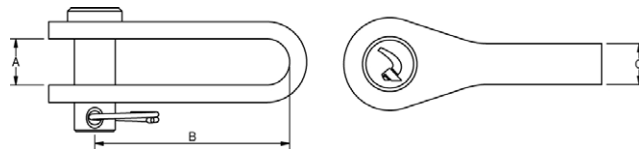
For lengthening the wire, or adding flexibility to installations, the toggles can be applied. Where a structure is subjected to stress the use of a toggle is essential as it can minimise the fatigue risk.

TOGGLES

Polished Stainless Steel - AISI 316

ART. NO.	PIN	A	B	C	B.L./KG	KG/100	PACK
140006	6,0	7,5	28	6,5	1800	2,3	10
140008	8,0	8,5	34	7,5	2600	4,0	10
140010	9,5	10,5	45	9,5	4000	5,9	10
140011	11,0	11,5	50	10,5	4800	8,5	10
140012	12,0	13,5	56	12,0	5800	12,4	10
140016	16,0	17,0	63	15,0	8000	22,5	BULK
140019	19,0	21,0	69	18,0	13000	40,7	BULK
140022	22,0	25,0	111	25,0	17000	80,2	BULK
140025	25,4	30	104	25,0	29000	105	BULK
140028	28	32	121	30,0	36000	147	BULK
140032	32	38	133	33,0	48000	225	BULK

Note: All breakloads are determined by clevis pin

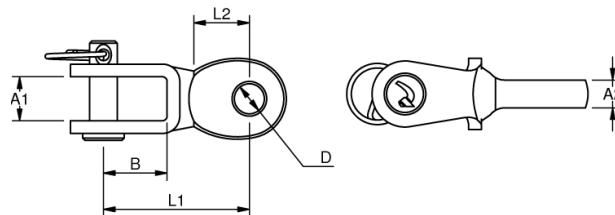


TOGGLES WITH EYE

Polished Stainless Steel - AISI 316

ART. NO.	PIN	A1	B	D	L1	L2	A2	B.L./KG	KG/100	PACK
140506	5	7,5	12	5,5	26	9	5	1300	1,8	25
140608	6	9,5	13	6,5	32	10	6	1800	3	10
140810	8	11	15	8,5	36	12	8	3200	5,5	10
141011	9,5	12	19	10,0	45	16	9	3500	7,2	10
141111	11	13	23	11,5	51	17	9	5200	12,1	10
141214	12	14	25	13,0	59	23	10	5900	14,5	10
141616	14	22	30	14,5	78	28	14	7500	28	10

Note: All breakloads are determined by clevis pin.

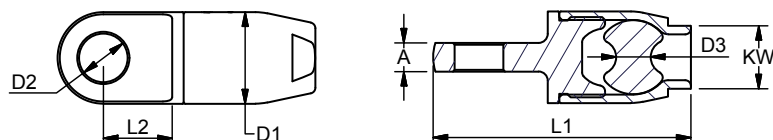


Benefitting from the knowledge on wire rope fittings Blue Wave has designed a fitting for use with Dyneema ropes. The eye can be used for Ø 4 mm to Ø 16 mm Dyneema rope and combined with other Blue Wave fittings! Separate rope folder available on request.

DYNEEMA ROPE EYE

Polished Stainless Steel - AISI 316

ART. NO.	DYNEEMA	A	D1	D2	D3	KW	L1	L2	B.L./KG	KG/100
RP820804	Ø4	5	16	8,5	6	11	45	12	1900	3,8
RP821005	Ø5	6	21	10,5	8	16	58,5	14,5	3200	8,5
RP821206	Ø6	9	25	13	10	19	71	17,5	5500	15,5
RP821408	Ø8	10	39	14,5	16	29	103,5	29,5	9400	47,2
RP821610	Ø10	13	45	16,2	18	33	120	34	15000	75,5
RP821912	Ø12	15	54	19,5	21	40	136,5	38	18000	117,1
RP822214	Ø14	18	65	23	26	47	163	42	26000	207,5
RP822516	Ø16	20	77	26	30	55	192	58	32000	302,2



Community Design Registration 14/6 2017
design reg. -004048098-0004