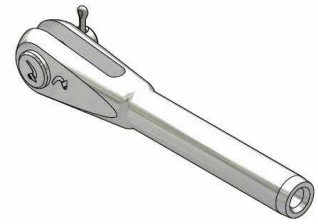
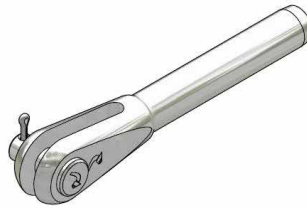
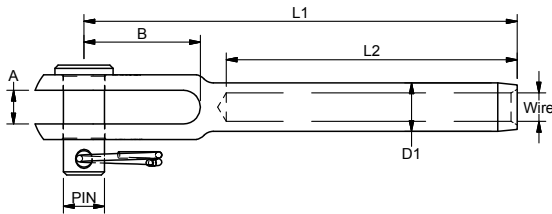


AIRCRAFT FORK TERMINAL - ACCORDING TO MS20667

Polished Stainless Steel - AISI 316

ART. NO.	WIRE		PIN		D1		L1		L2		A		B		B.L./KG KG/100 PACK		
	mm	inch	mm	inch	mm	inch	mm	inch	mm	inch	mm	inch	mm	inch			
ACF4516	1/16"	5	3/16"	4	5/32"	40	1 37/64"	26	1 3/64"	2,5	3/32"	12,7	1/2"	600	0,7	10	
ACF4502	2	5	3/16"	5,5	7/32"	49	1 15/16"	32	1 17/64"	2,8	7/64"	12,7	43/64"	1.190	1,2	10	
ACF4525	2,5	3/32"	5	3/16"	5,5	7/32"	49	1 15/16"	32	1 17/64"	2,8	7/64"	12,7	43/64"	1.050	1,2	10
ACF4503	3	5	3/16"	6,35	1/4"	60	2 23/64"	38	1 33/64"	5,2	13/64"	18,7	47/64"	1.380	1,8	10	
ACF4532	1/8"	5	3/16"	6,35	1/4"	60	2 23/64"	38	1 33/64"	5,2	13/64"	18,7	47/64"	1.320	1,7	10	
ACF0604	4	5/32"	6,35	1/4"	7,5	19/64"	67	2 21/32"	45	1 49/64"	5,2	13/64"	18,0	51/64"	1.730	2,5	10
ACF0805	5	3/16"	8	5/16"	9	23/64"	78	3 5/64"	51	2 1/64"	6,35	1/4"	22,2	7/8"	2.492	4,5	10
ACF0855	7/32"	8	5/16"	10,8	27/64"	87	3 7/16"	57	2 17/64"	7,9	5/16"	24,6	31/32"	3.900	6,8	10	
ACF9506	6	10	12,58	1/2"	97	3 13/16"	64	2 33/64"	7,9	5/16"	27,0	1 1/16"	5.460	10,7	10		
ACF95635	1/4"	10	3/8"	12,58	1/2"	97	3 13/16"	64	2 33/64"	7,9	5/16"	27,0	1 1/16"	5.270	10,6	10	
ACF1107	7	9/32"	11	7/16"	14,2	9/16"	105	4 1/8"	70	2 49/64"	8,3	21/64"	25,4	1 11/64"	6.840	15,1	10
ACF1108	8	5/16"	11	7/16"	16	41/64"	113	4 7/16"	76	3 1/64"	8,7	11/32"	32,1	1 17/64"	8.650	19,3	10
ACF1395	3/8"	12,7	1/2"	17,8	45/64"	135	5 21/64"	89	3 33/64"	9,5	3/8"	38,9	1 17/32"	10.200	27,5	10	
ACF1410	10	14	20	25/32"	163	6 13/32"	102	4 1/64"	9,5	3/8"	45,2	1 25/32"	13.647	44,7	5		
ACF1411	7/16"	14	9/16"	20	25/32"	163	6 13/32"	102	4 1/64"	9,5	3/8"	45,2	1 25/32"	12.600	43,2	5	
ACF1612	12	16	21,4	27/32"	176	6 15/16"	119	4 45/64"	11,9	15/32"	48,4	1 29/32"	14.210	50,6	5		
ACF1613	1/2"	16	5/8"	21,4	27/32"	176	6 15/16"	119	4 45/64"	11,9	15/32"	48,4	1 29/32"	12.980	48,6	5	



RIGGING SCREWS FORK-TERMINAL - SMALL

Polished Stainless Steel - AISI 316L



ART. NO.	G	WIRE DIM		PIN	A	B	D	L1	L2	L3	B.L./KG KG/100
A120305	M5	3,0	1/8"	5,0	7,5	12,0	5,50	153	117	25	360 3,1
A120406	M6	4,0	5/32"	5,0	7,5	12,0	6,35	166	122	25	640 4,9
A120506	M6	5,0	3/16"	6,0	9,5	13,0	7,50	176	132	30	1000 5,9
A120608	M8	6,0	-	8,0	11,0	15,0	9,00	209	163	40	1400 10,4
A120810	M10	8,0	5/16"	8,0	11,0	15,0	12,58	235	187	50	2300 18,7
A121012	M12	10,0	-	9,5	12,5	19,5	16,00	264	216	60	3600 31,8

