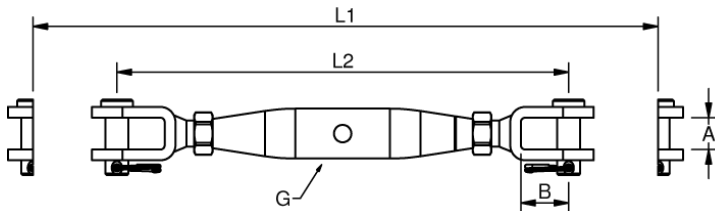


RIGGING SCREWS FORK-FORK - SMALL

Polished Stainless Steel - AISI 316L

ART. NO.	G	PIN	A	B	L1	L2	B.L./KG	KG/100
A12120505	M5	5,0	7,5	12	143	106	800	3,7
A12120506	M6	5,0	7,5	12	155	111	1200	5,7
A12120606	M6	6,0	9,5	13	159	115	1200	6,7
A12120808	M8	8,0	11,0	15	186	140	2200	11,3
A12121010	M10	8,0	11,0	15	204	157	3200	19,2
A12121212	M12	9,5	12,0	19	248	200	5100	32,1



WELDED SWAGELESS FORK TERMINALS

High Polished Stainless Steel - AISI 316

ART. NO.	WIRE DIM.	PIN	A	B	L1	KW	B.L./KG	KG/100
840504	4	5	7,5	12	56,8	14	800	4,3
840505	5	5	7,5	12	56,8	14	800	4,5

