

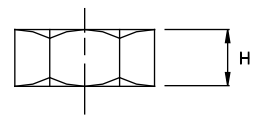
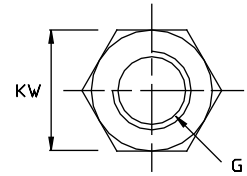
## STOP NUT

Polished Stainless Steel - AISI 316

NO. RIGHT	NO. LEFT	G	H	KW	KG/100	PACK PCS
041205	051205	M5	4	8	0,10	BULK
041206	051206	M6	4	8	0,10	BULK
041208	051208	M8	5	10	0,15	BULK
041210	051210	M10	7	13	0,25	BULK
041212	051212	M12	8	17	0,70	BULK
041214	051214	M14	10	19	1,30	BULK
041216	051216	M16	11	22	2,00	BULK
041220	051220	M20	13	24	2,25	BULK
041222	051222	M22	17	30	3,50	BULK
041224	051224	M24	18	36	8,80	BULK
041227	051227	M27	22	41	16,0	BULK
041230	051230	M30	24	46	17,0	BULK
041236	051236	M36	29	55	39,0	BULK
041242	051242	M42	31	60	47,2	BULK
041248	051248	M48	38	70	79,9	BULK
041252	051252	M52	42	75	98,8	BULK



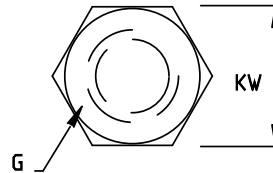
Nuts may be used for locking e.g. a rigging screw or they are very useful to tighten a thread terminal to tension a wire.



## TOP NUT

Stainless Steel - AISI 304

ART.NO.	G	KW	KG/100
A040503	M5	8	0,2
A040604	M6	10	0,4
A040806	M8	13	0,9

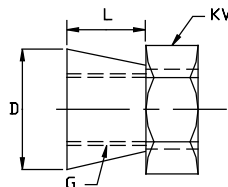


The top nut locks and at the same time covers up the thread end.

## SECURITY NUT

Polished Stainless Steel - AISI 316

ART. NO.	G	D	L	KW	KG/100	BREAK	PACK
044310	M10	17	9,0	17	1,3	50Nm	BULK
044312	M12	20	10,5	22	2,3	50Nm	BULK

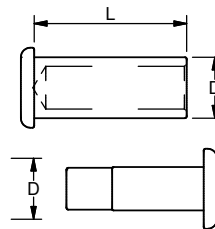


The security nut is the ideal solution where the nut has to remain permanently tightened. Once tightened, the KEY part breaks off and only a cone is left.

## PRESS-PINS

Polished Stainless Steel - AISI 316L

ART. NO.	D	L	KG/100
061505P	5	15	0,4
061706P	6	17	0,5
062008P	8	20	1,0
062210P	10	22	1,7

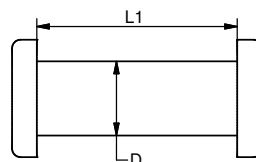


The press pin is a tamper proof alternative to the standard clevis pins. Fits the Blue Wave welded forks.

## DOUBLE HEADED PIN

Stainless Steel - AISI 316

ART. NO.	D	L	KG/100
061606H	6	16,2	1,0
062008H	8	19,5	1,5
062110H	9,8	21,2	2,4



Elegant and tamper proof alternative to standard clevis pins. Fits the Blue Wave welded forks.