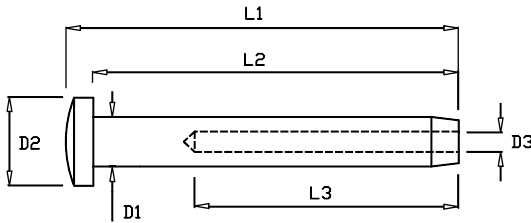


# DOMEHEAD TERMINALS

Polished Stainless Steel - AISI 316

ART. NO.	WIRE DIM.	D1	D2	D3	L1	L2	L3	KG/100	PACK
660003	3 1/8"	6,35	10,0	3,5	52,0	48,5	38	1,1	20
660004	4 5/32"	7,50	11,5	4,4	59,0	55,5	45	2,4	20
660005	5 3/16"	9,00	14,0	5,3	66,5	62,5	51	3,8	20
660006	6 -	12,58	18,0	6,5	79,0	74	64	7,9	20



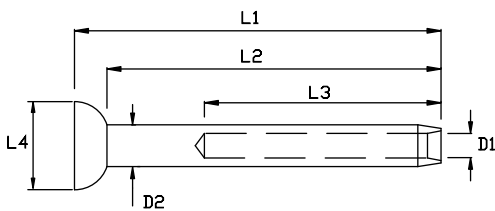
Domehead terminals by Blue Wave are engraved with wire size and swage depth marking, making them easier to work with and to press or swage onto the wire.



# BALL TERMINAL

Polished Stainless Steel - AISI 316

ART. NO.	WIRE DIM.	D1	D2	L1	L2	L3	L4	KG/100	PACK
620003	3 1/8"	3,5	6,4	58	54	38	13,0	1,1	20
620004	4 5/32"	4,4	7,5	69	63	45	16,0	2,4	20
620005	5 3/16"	5,3	9,0	79	72	51	19,0	3,8	20
620006	6 -	6,5	12,6	90	84	64	20,0	7,9	20
620007	7 9/32"	7,5	14,2	94	87	70	21,3	10,0	20
620008	8 5/16"	8,4	16,0	116	108	83	26,3	16,9	10
620010	10 -	10,5	17,8	129	119	89	27,5	23,5	10
620012	12 -	12,5	20,0	145	135	105	28,0	26,7	5



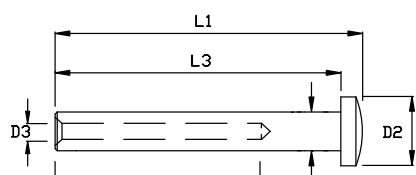
Blue Wave's Ball terminals are marked with wire size and wire-hole depth, to make it easier to work with and press or swage onto the wire.



# DOMEHEAD TERMINAL - SMALL

Stainless Steel - AISI 316

ART.NO.	WIRE DIM	D1	D2	D3	L1	L2	L3	B.L./KG	KG/100
A100003	3,0 1/8"	5,5	8	3,5	35	25	32,0	360	0,5
A100004	4,0 5/32"	6,35	10	4,4	35	25	32,0	640	0,7
A100005	5,0 3/16"	7,5	12	5,3	41	30	37,0	1000	1,0
A100006	6,0 -	9,0	14	6,5	52	40	47,0	1400	1,9



The small domehead terminals are for lighter architectural fixing of wires. The focus of the design is the size. Overall dimensions have thus been reduced to a minimum, leaving markings out. The small fittings are suitable for hand crimping with Blue Wave Arctool ACC1 & Arctool8, see page 66+67.

