

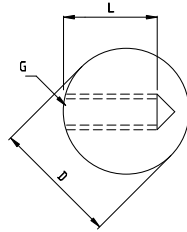


The range of WDS balls are used as stop ends to various wire fittings. They are also ideally suited for angled installation of wires.

WDS BALL

Stainless Steel - **AISI 316**

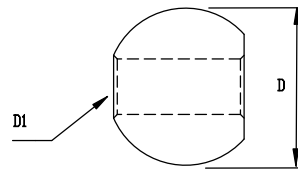
ART. NO.	WIRE DIM.	G	D	L	KG/100
A240503	3	M5	15,0	12	1,9
A240503X	3	M5	20,0	16	2,9
A240605	4,0 / 5,0	M6	20,0	16	2,9
A240806	6	M8	25,0	20	5,7



BALL FOR DOMEHEAD SCREW

Stainless Steel - **AISI 316**

ART. NO.	G	D	D1	KG/100
A270503	M5	15,0	5,3	1,2
A270604	M6	20,0	6,3	2,9
A270806	M8	25,0	8,5	5,7
A271008	M10	30,0	10,5	8,8



BALL FOR DOMEHEAD TERMINAL

Stainless Steel - **AISI 316**

ART. NO.	WIRE	D	D1	KG/100
A280003	3	15.0	6.0	2.2
A280004	4	20.0	7.0	2.9
A280005	5	20.0	8.0	5.7
A280006	6	25.0	9.5	5.7

