

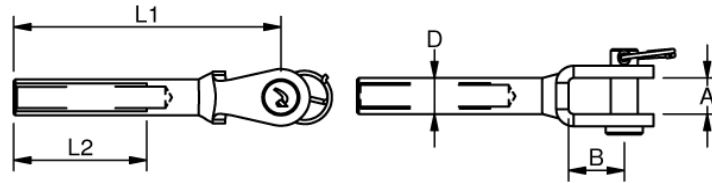


## INSIDE THREAD FORK WELDED - SMALL

Stainless Steel - AISI 316

For small architectural wires another good alternative to rigging screw adjustment, is the inside thread forks! The forks have a light design, as dimensions are reduced to a minimum - the forks are available with left handed and right handed threads as well as in a welded, and machined version.

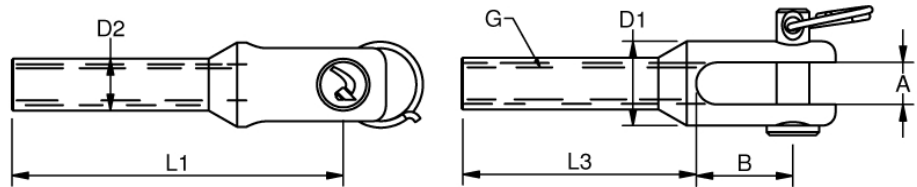
NO. RIGHT	NO. LEFT	G	WIRE	PIN	A	B	D	L1	L2	B.L./KG	KG/100
A340503	A350503	M5	3	5	7,5	12,0	7,1	59	25	800	1,4
A340504	A350504	M6	4	5	7,5	12,0	8,0	67	30	1000	1,9
A340605	A350605	M6	5	6	9,5	13,0	8,0	68	30	1300	2,2
A340806	A350806	M8	6	8	11	15,0	11,0	79	35	2350	4,5



## INSIDE THREAD FORK - MACHINED - SMALL

Stainless Steel - AISI 316

NO. RIGHT	NO. LEFT	G	PIN	A	B	D1	D2	L1	L2	L3	B.L./KG	KG/100
A370503	A380503	M5	5	5,5	12,3	11	8	40	24	28	400	1,4
A370604	A380604	M6	5	6,5	14,8	13	8	50	30	36	800	1,9
A370806	A380806	M8	6	8,5	19,3	16	11	60	35	41	1200	2,2



The machined adjuster forks are well suited when larger wires are installed with inside thread forks. For further details see page 24