



## FORK TERMINALS - MACHINED

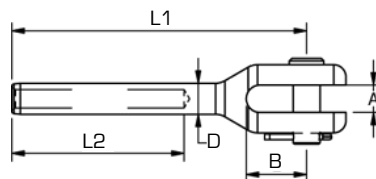
Polished Stainless Steel - AISI 316

As demand for larger wire sizes has been growing, so has the range of larger machined fittings by Blue Wave. The machined forks are, as most fittings by Blue Wave, marked with wire size and swage depth marking for ease of use.



ART. NO.	WIRE	PIN	A	B	D	L1	L2	B.L./KG	KG/100	PACK
721912	12	19	20	45	20,0	197	105	9500	100	BULK
722214	14	22	22	49	25,0	239	140	15000	170	BULK
722516	16	25	25	52	28,0	271	160	19000	210	BULK
722819	19	28	30	55	34,5	327	200	27000	330	BULK
723222	22	32	35	67	40,4	377	230	35000	480	BULK
723526	26	35	35	67	46,0	435	280	48000	700	BULK
* 724028	28	40	34	75	50,0	443	300	70000	859	BULK
* 724530	30	45	38	91	50,0	508	340	75000	1062	BULK
* 724532	32	45	38	91	58,0	508	340	90000	1262	BULK
* 725036	36	50	49	100	65,0	575	380	110000	1875	BULK

\* Note: Material 1.4462 (SAF 2205) Recommendable with A500 Swaging machine and also available in 1.4404



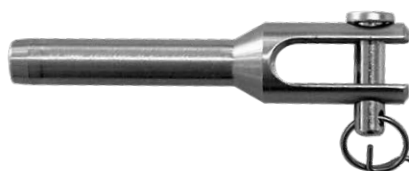
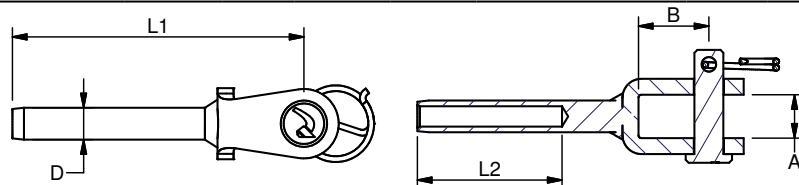
## FORK TERMINALS - WELDED - SMALL

Polished Stainless Steel - AISI 316

Blue Wave's small fork terminals are for lighter architectural fixing of wires. The focus of the design is the size. Overall dimensions have thus been reduced to a minimum. The small fittings are suitable for hand crimping with Blue Wave Arctool-1ACC & Arctool8, see page 66+67, or roll swaged using a standard machine and smaller die.



ART. NO.	WIRE	PIN	A	B	D1	L1	L2	B.L./KG	KG/100
A360503	3	5,0	7,5	12,0	5,50	50	25	360	1,0
A360504	4	5,0	7,5	12,0	6,35	50	25	640	1,5
A360605	5	6,0	9,5	13,0	7,50	58	30	1000	2,2
A360806	6	8,0	11,0	15,0	9,00	72	40	1400	3,7
A360808	8	8,0	11,0	15,0	12,58	85	50	2300	8,0
A361010	10	9,5	12,0	19,5	16,00	106	60	3600	14,1



## FORK TERMINALS - MACHINED - SMALL

Stainless Steel - AISI 316

Blue Wave's small fork terminals are for lighter architectural fixing of wires. The focus of the design is the size. Overall dimensions have thus been reduced to a minimum. The small fittings are suitable for hand crimping with Blue Wave Arctool-1ACC & Arctool8, see page 66+67, or roll swaged using a standard machine and smaller die.



ART. NO	WIRE	PIN	A	B	D1	D2	L1	L2	B.L./KG	KG/100
A390503	3	5	5,5	12	5,50	11	48	25	360	1,03
A390504	4	5	6,5	15	6,35	13	53	25	640	1,43
A390505	5	5	6,5	15	7,50	13	57	30	1000	2,23
A390606	6	6	8,5	19	9	16	75	40	1400	3,66

