



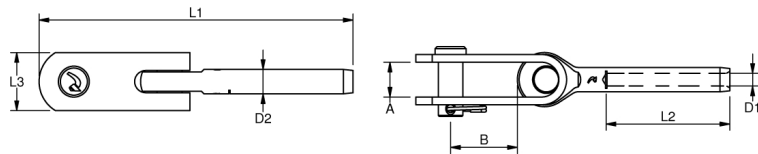
## TOGGLE TERMINAL

Polished Stainless Steel - AISI 316

The flexible Blue Wave toggle terminal is marked with wire size & wire-hole depth making it easier to work with and to press or swage onto the wire. Its uses are for diagonal or angle installations and also to minimize the risk of fatigue due to sideway loads.

ART. NO.	WIRE DIM.	PIN	A	B	D1	D2	L1	L2	L3	B.L.	KG/100 PACK	
500503G	3 1/8"	5,0	7	11,5	3,5	6,35	78	38	12	1000	3,1	10
500603	3 1/8"	6,35	8	17	3,5	6,35	81	38	14	1300	4,3	10
500504G	4 5/32"	5,0	7	11,5	4,4	7,5	85	45	12	1000	3,5	10
506304G	4 5/32"	5,0	7	14	4,4	7,5	91	45	12	1400	4,8	10
500804	4 5/32"	8,0	10	25	4,4	7,5	94	45	18	1700	7,3	10
506305G	5 3/16"	6,35	10	14	5,3	9,0	99	51	12	1400	5,7	10
509505	5 3/16"	9,5	12	27	5,3	9,0	116	51	23	2400	13,8	10
* 506306G	6 -	6,35	10	14	6,5	9	85	40	12	1400	6,9	10
501106X	6 -	11,0	15	29	6,5	12,58	135	64	30	5500	27,3	10
501206X	6 -	12,7	18	33	6,5	12,58	151	64	30	5500	33,4	5
501207X	7 9/32"	12,7	18	33	7,5	14,2	157	70	30	6200	35,7	5
501208D	8 5/16"	12,7	18	33	8,4	13,0	170,5	83	30	4600	36,0	5
501308	8 5/16"	12,7	18	33	8,4	16,0	170	83	30	6200	37,5	5
501608X	8 5/16"	15,9	20	41	8,4	16,0	198	83	35	8700	59,7	5
501610	10 -	15,9	20	41	10,5	17,8	192	89	35	9700	64,3	5
501910X	10 -	19,0	24	43	10,5	17,8	228	100	40	9700	100,0	BULK
501912	12 -	19,0	24	43	12,5	20,0	220	105	40	11400	98,8	BULK
501912X	12 -	19,0	24	43	12,5	21,4	240	120	40	13000	103,0	BULK
502214	14 -	22,0	26	47	14,8	25,0	277	140	50	15900	170,2	BULK
502516	16 5/8"	25,4	29	60	17,0	28,0	313	160	60	19400	265,5	BULK
502819	19 3/4"	28,0	34	63	20,0	34,5	399	200	60	25500	612,0	BULK
503222	22 7/8"	32,0	40	73	23,5	40,4	463	230	75	31000	570,0	BULK
503526	26 1"	36,0	44	80	27,5	46,0	518	280	85	43000	750,0	BULK

\* Note: Terminal OD = 9 mm

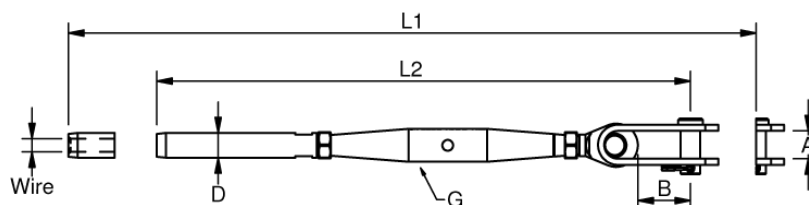


## RIGGING SCREWS TOGGLE-TERMINAL

Polished Stainless Steel - AISI 316

ART. NO.	G	WIRE	PIN	A	B	D	L1	L2	B.L.	PACK
320306	M6	3	6,4	8	17	6,35	271	201	1200	BULK
320408	M8	4	8,0	10	20	7,5	310	240	1700	BULK
320510	M10	5	9,5	12	26	9,0	361	278	2500	BULK
320612X	M12	6	12,7	18	35	12,6	448	340	5100	BULK
320712X	M12	7	12,7	18	35	14,2	456	348	5100	BULK
320812X	M12	8	12,7	18	35	16,0	471	363	5100	BULK
320816X	M16	8	16,0	20	41	16,0	566	436	8000	BULK
321020X	M20	10	19,0	24	45	17,8	642	488	9700	BULK
321220X	M20	12	19,0	24	45	20,0	661	507	11400	BULK
321220XX	M20	12	19,0	24	45	21,4	677	523	14200	BULK
321422X	M22	14	22,0	26	49	25,0	808	627	15900	BULK
321624X	M24	16	25,4	29	59	28,0	963	730	19400	BULK
321927X	M27	19	28,0	34	60	34,5	1071	836	25500	BULK
322230X	M30	22	32,0	40	69	40,5	1193	931	31000	BULK
322636X	M36	26	36,0	44	77	46,0	1319	1045	43000	BULK

Note: All breakloads are determined by Clevis Pin & thread



Blue Wave rigging screws bodies feature thread size, "easy use" marking for left and right threaded side and adjustment hole. From M20 upwards the bodies are available with chrome bronze threaded inserts and spanner flat on body, for smooth adjustment.

