

BALL/TERMINAL UNF

High Polished Stainless Steel - AISI 316 - Chromed Bronze Body

The Blue Wave Chromed Bronze Body features a number of details that makes it the best choice for exclusive and durable rigging. The sleek, open Bronze body prevents the threads from siezing up, they are delivered with laser engraved thread size, Blue Wave logo, and side marking of the left thread.

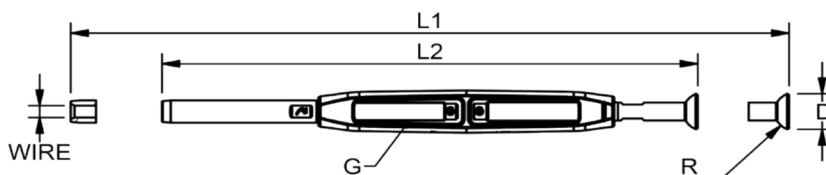


ART.NO.	THREAD G	WIRE	D	R	L1	L2	KG/100	BL/KG	PACK
630306A	1/4"	3 1/8"	13	6	244	182	10,3	1300	BULK
630408A	5/16"	4 5/32"	19	7	305	215	14,6	1700	BULK
630510A	3/8"	5 3/16"	19	7	324	240	21,5	2400	BULK
630610A	3/8"	6 -	19	7	339	255	24,6	3400	BULK
630611A	7/16"	6 -	20	7	370	280	33,6	4600	BULK
630711A	7/16"	7 9/32"	20	7	375	285	36,3	4600	BULK
630712A	1/2"	7 9/32"	20	7	415	309	49,6	6100	BULK
630812A	1/2"	8 5/16"	20	7	430	324	54,8	6100	BULK
630816A	5/8"	8 5/16"	25	10	499	367	88,7	8700	BULK
631016A	5/8"	10 -	25	10	508	376	92,9	9700	BULK
631220A	3/4"	12 -	28	14	597	437	138,8	11400	BULK
* 631220AX	3/4"	12 -	28	14	613	453	138,8	14000	BULK

* Note: Terminal OD. = 21,4 mm

Note: All break loads are determined by clevis pin and thread.

The user is responsible for choosing the proper cable diameter and for correct assembly.



TOGGLE/TERMINAL UNF

High Polished Stainless Steel - AISI 316 - Chromed Bronze Body



ART.NO.	THREAD G	WIRE	PIN	A	B	L1	L2	BL/KG	KG/100	PACK
330306A5G	1/4"	3	5	7	11,5	250	188	1000	10,2	10
333206A5G	1/4"	1/8"	5	7	11,5	250	188	1000	10,2	10
330406A5G	1/4"	4 5/32"	5	7	11,5	260	198	1000	10,8	10
330406A6G	1/4"	4 5/32"	6,35	10	14	269	207	1300	12,2	10
330506A6G	1/4"	5 3/16"	6,35	10	14	273	211	1300	13,0	10
330606A6G	1/4"	6	6,35	10	14	265	203	1300	12,4	10
330306A	1/4"	3	6,35	8	17	255	193	1300	12,7	10
333206A	1/4"	1/8"	6,35	8	17	255	193	1300	12,7	10
330406A	1/4"	4 5/32"	6,35	8	17	265	203	1300	13,0	10
330408A	5/16"	4 5/32"	8,0	10	20	304	228	1700	17,4	10
330508A	5/16"	5 3/16"	8,0	10	20	310	234	2200	18,5	10
330510A	3/8"	5 3/16"	9,5	12	26	349	265	2400	28,2	5
335510A	3/8"	7/32"	9,5	12	26	357	273	3400	29,0	5
330610A	3/8"	6	9,5	12	26	364	280	3400	32,5	5
330611AX	7/16"	6	11,0	15	28	397	307	4600	47,5	5
330711AX	7/16"	7 9/32"	11,0	15	28	408	318	4600	47,5	5
330612AX	1/2"	6	12,7	18	35	425	319	5400	74,0	5
336312AX	1/2"	1/4"	12,7	18	35	425	319	5200	75,0	5
330712AX	1/2"	7 9/32"	12,7	18	35	433	327	6100	77,0	5
330812AX	1/2"	8 5/16"	12,7	18	35	448	342	6100	82,0	5
330816AX	5/8"	8 5/16"	16,0	20	41	536	404	8700	126,0	BULK
331016AX	5/8"	10	16,0	20	41	545	413	9700	135,0	BULK
339520AX	3/4"	3/8"	19,0	24	45	625	465	10200	190,0	BULK
331020AX	3/4"	10	19,0	24	45	625	465	9700	190,0	BULK
331220AX	3/4"	12	19,0	24	45	640	480	11400	200,0	BULK
* 331220AXX	3/4"	12	19,0	24	45	660	500	14000	200,0	BULK
* 331320AX	3/4"	1/2"	19,0	24	45	661	501	12900	202,0	BULK
* 331222AX	7/8"	12	22,0	26	49	786	592	14000	311,0	BULK
331422AX	7/8"	14	22,0	26	49	794	600	15900	309,0	BULK
331425AX	1"	14	25,4	29	59	932	692	15900	512,0	BULK
331625AX	1"	16 5/8"	25,4	29	59	940	700	19400	505,0	BULK
331927AX	1 1/8"	19 3/4"	28,0	34	62	1034	790	27600	857,9	BULK
332230AX	1 1/4"	22 7/8"	32,0	40	69	1153	877	34600	1186,5	BULK
332636AX	1 3/8"	26 1"	35,0	44	81	1296	990	42400	1613,9	BULK
332842A	1 5/8"	28 1 1/8"	40	48	99	1554	1178	59700	2461,3	BULK

*Note: Terminal OD. = 21,4 mm

Note: All break loads are determined by clevis pin and thread.

