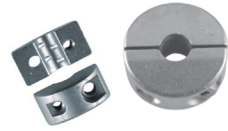


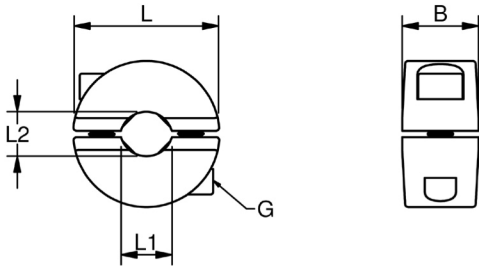
STOPPER

Stainless Steel - **AISI 316** - Inside jaws for better grip



Stoppers are used on both horizontal and vertical wires. They come in two parts for easy installation; have small teeth inside and thus a better grip when load is applied.

ART. NO.	WIRE	G	B	L	L1	L2	SLIP LOAD	KG/100
A650003	3	M3	10	15	3	2,5	100kg	1,4
A650004	4	M3	10	15	4	3,0	100kg	1,4
A650005	5	M3	10	20	5	4,0	100kg	2,1
A650006	6	M3	10	20	6	5,0	100kg	2,1
A650008	8	M4	12	23	8	7,0	150kg	2,6



BALLUSTRADE WIRE RELIEF

Nylon

ART. NO.	D1	D2	D3	L1	KG/100	PACK
A6504	4,2	13,0	9,2	11,2	0,1	100
A6506	6,4	14,0	10,2	13,1	0,12	100
A6508	8,4	15,6	12,8	13,1	0,14	100



Black split bushing for push or glue in.

