

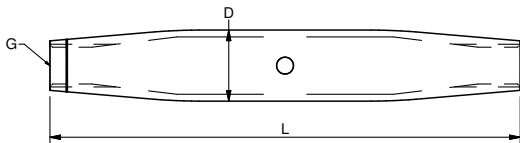
# BODIES

## AISI 316

ART. NO.	G	D1	L1	KW	B.L./KG	KG/100
O11205	M5	8	80	0	800	1,2
O11206	M6	10	92	0	1200	2,6
O11208	M8	14	112	0	2200	6,0
O11210	M10	17	120	0	3500	9,4
O11212	M12	21	150	0	5100	16,0
O11214	M14	21	170	0	6900	18,4
O11216	M16	27	190	0	9400	27,2
O11220	M20	34	220	0	14000	46,8
O11222	M22	40	270	0	18000	120,0
O11224	M24	42	320	0	21000	147,5
O11227	M27	55	345	0	23000	210,0
O11230	M30	55	380	0	28000	309,0
! O12320	M20	40	240	36	14000	158,2
! O12322	M22	40	270	41	18000	161,6
! O12324	M24	50	325	46	21000	312,6
! O12327	M27	55	345	50	23000	408,1
! O12330	M30	60	375	55	28000	538,4
! O12336	M36	65	410	60	41000	602,8
!* O12342	M42	69	440	64	70000	774,0
!* O12348	M48	74	490	68	90000	922,8
!* O12352	M52	79	540	72	110000	1141,5

\* Note: Material 1.4462 (SAF 2205)

! Body with bronze inserts



Blue Wave rigging screws bodies feature thread size, "easy use" marking for left and right threaded side and adjustment hole. From M20 upwards the bodies are available with chrome bronze threaded inserts and spanner flat on body, for smooth adjustment.

## INSIDE THREAD - SMALL

Stainless Steel - AISI 316



NO. RIGHT	NO. LEFT	G	WIRE DIM	D1	D2	D3	L1	L2	L3	L4	B.L./KG	KG/100
A140503	A150503	M5	3 1/8"	7,13	5,5	3,5	65	25	20	35	360	1,2
A140604	A150604	M6	4 5/32"	8,00	6,4	4,4	65	25	20	35	640	1,7
A140605	A150605	M6	5 3/16"	8,00	7,5	5,3	70	30	20	30	1000	2,6
A140806	A150806	M8	6 -	11,00	9,0	6,5	85	40	25	40	1400	6,3

The small inside thread terminals are for lighter architectural fixing of wires. The terminals are available with left handed and right handed threads, with dimensions reduced to a minimum. These terminals are suitable for hand crimping with Blue Wave Arctool ACC1 & Arctool8, see page 66+67.

